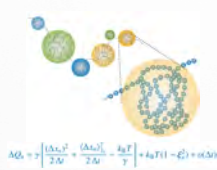
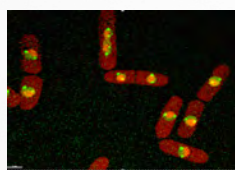


# International Summer School on Chromatin Dynamics 2015



**DATE: September 1 (TUE) ~ 4 (FRI), 2015**

**PLACE: Research Center for the Mathematics on Chromatin Live Dynamics,  
Hiroshima University (Higashi-Hiroshima, Japan)**

The Research Center for the Mathematics on Chromatin Live Dynamics (RcMcD) will provide an introductory course on analysis of live imaging data of the cell nucleus. The course is comprised of image processing practice and lectures on the physics and mathematical analysis beyond. Students in biology as well as in mathematical, physical, or computational sciences (from bachelor to doctoral course) are welcome.

## 【Program】

- September 1 (TUE) Opening, General Introduction
- 2 (WED) Lecture, Luncheon seminar, and Practical Course (image processing)
- 3 (THU) Lecture, Luncheon seminar, and Practical Course (analysis)
- 4 (FRI) Presentation, Closing

\*The program starts around 17:00 on Tuesday and ends around 12:00 on Friday.

## 【How to Apply】

Please send the application form (see below) to RcMcD by e-mail.

[http://www.mls.sci.hiroshima-u.ac.jp/chrom/ja/edu\\_ss.html](http://www.mls.sci.hiroshima-u.ac.jp/chrom/ja/edu_ss.html)

## 【Deadline】

June 30 (TUE)

- \* As the number of participants is limited to 20, there may be selection.  
We will contact the applicants by the end of July.

## 【Travel Expenses and Accommodation】

RcMcD will support the travel and accommodation expenses.

- \* For international participants: please ask for details.